



PRODUCT INDEX

LED Bulb&Tube	01---12
LED Floodlight	13---14
LED Panel Light	15
LED Strip Light&Stage Light	16---19
LED Downlight	20---24
Emergency Light	25---30
LED Driver	31
Bulb&Tube	32---35
Fluorescent Fixture	36
Transformer	37
Outdoor Light	38-50



LED Bulb

NINGBO EVERRISING IMPORT&EXPORT CO.,LTD.

Http://www.neiec.cn
E-mail:neiec@neiec.cn



P45
Input Voltage(V): AC110/220V
Wattage: 3/4/5W
Lumen: 230-440Lm
Size: 45X81MM
CCT: 2700-6500K



P45
Input Voltage(V): AC110/220V
Wattage: 3/4/5W
Lumen: 230-440Lm
Size: 45X81MM
CCT: 2700-6500K



P45-01
Input Voltage(V): AC110/220V
Wattage: 3/4/5W
Lumen: 230-440Lm
Size: 45X81MM
CCT: 2700-6500K



G45
Input Voltage(V): AC110/220V
Wattage: 3/4/5W
Lumen: 230-440Lm
Size: 45X78MM
CCT: 2700-6500K



G45-01
Input Voltage(V): AC110/220V
Wattage: 3/4/5W
Lumen: 230-440Lm
Size: 45X81MM
CCT: 2700-6500K



A50
Input Voltage(V): AC110/220V
Wattage: 3/5W
Lumen: 230-440Lm
Size: 50X98MM
CCT: 2700-6500K



A60
Input Voltage(V): AC110/220V
Wattage: 5/7/9/12W
Lumen: 400-1050Lm
Size: 60X108MM
CCT: 2700-6500K



A60-01
Input Voltage(V): AC110/220V
Wattage: 5/7/9/12W
Lumen: 400-1050Lm
Size: 60X108MM
CCT: 2700-6500K



A60-02
Input Voltage(V): AC110/220V
Wattage: 5/7/9/12W
Lumen: 400-1050Lm
Size: 60X112MM
CCT: 2700-6500K

LED Bulb



A60-03
Input Voltage(V): AC110/220V
Wattage: 5/7/9/12W
Lumen: 400-1050Lm
Size: 60X108MM
CCT: 2700-6500K



A60-04
Input Voltage(V): AC110/220V
Wattage: 5/7/9/12W
Lumen: 400-1050Lm
Size: 60X116MM
CCT: 2700-6500K



A60-04
Input Voltage(V): AC110/220V
Wattage: 5/7/9/12W
Lumen: 400-1050Lm
Size: 60X120MM
CCT: 2700-6500K



A60-05
Input Voltage(V): AC110/220V
Wattage: 5/7/9/12W
Lumen: 400-1050Lm
Size: 60X118MM
CCT: 2700-6500K



A60-06
Input Voltage(V): AC110/220V
Wattage: 5/7/9/12W
Lumen: 400-1050Lm
Size: 60X112MM
CCT: 2700-6500K



A60-07
Input Voltage(V): AC110/220V
Wattage: 5/7/9/12W
Lumen: 400-1050Lm
Size: 60X112MM
CCT: 2700-6500K



A60-08
Input Voltage(V): AC110/220V
Wattage: 5/7/9/12W
Lumen: 400-1050Lm
Size: 60X112MM
CCT: 2700-6500K



A60-09
Input Voltage(V): AC110/220V
Wattage: 5/7/9/12W
Lumen: 400-1050Lm
Size: 60X117MM
CCT: 2700-6500K



A60-10
Input Voltage(V): AC110/220V
Wattage: 5/7/9/12W
Lumen: 400-1050Lm
Size: 60X117MM
CCT: 2700-6500K

LED Bulb



P020
Input Voltage(V): AC110/220V
Wattage: 8W
Lumen: 560-600Lm
Size: 63X87MM
CCT: 2700-6500K



P022
Input Voltage(V): AC110/220V
Wattage: 13W
Lumen: 900-1000Lm
Size: 91X110MM
CCT: 2700-6500K



P024
Input Voltage(V): AC110/220V
Wattage: 18W
Lumen: 900-1000Lm
Size: 120X133MM
CCT: 2700-6500K



PAR38
Input Voltage(V): AC110/220V
Wattage: 18W
Lumen: 1150-1250Lm
Size: 120X133MM
CCT: 2700-6500K



R39
Input Voltage(V): AC110/220V
Wattage: 4W
Lumen: 280-320Lm
Size: 39X65MM
CCT: 2700-6500K



R39-01
Input Voltage(V): AC110/220V
Wattage: 4W
Lumen: 280-320Lm
Size: 39X65MM
CCT: 2700-6500K



R39-02
Input Voltage(V): AC110/220V
Wattage: 4W
Lumen: 280-320Lm
Size: 39X65MM
CCT: 2700-6500K



R39-03
Input Voltage(V): AC110/220V
Wattage: 4W
Lumen: 280-320Lm
Size: 39X65MM
CCT: 2700-6500K



R50
Input Voltage(V): AC110/220V
Wattage: 6W
Lumen: 450-490Lm
Size: 50X84MM
CCT: 2700-6500K

LED Bulb



R50-01
Input Voltage(V): AC110/220V
Wattage: 6W
Lumen: 450-490Lm
Size: 50X84MM
CCT: 2700-6500K



R50-02
Input Voltage(V): AC110/220V
Wattage: 6W
Lumen: 450-490Lm
Size: 50X84MM
CCT: 2700-6500K



R50-03
Input Voltage(V): AC110/220V
Wattage: 6W
Lumen: 450-490Lm
Size: 50X84MM
CCT: 2700-6500K



R50-04
Input Voltage(V): AC110/220V
Wattage: 6W
Lumen: 450-490Lm
Size: 50X84MM
CCT: 2700-6500K



R63
Input Voltage(V): AC110/220V
Wattage: 8W
Lumen: 560-600Lm
Size: 63X112MM
CCT: 2700-6500K



R63-01
Input Voltage(V): AC110/220V
Wattage: 8W
Lumen: 560-600Lm
Size: 63X112MM
CCT: 2700-6500K



R63-02
Input Voltage(V): AC110/220V
Wattage: 8W
Lumen: 560-600Lm
Size: 63X112MM
CCT: 2700-6500K



R63-03
Input Voltage(V): AC110/220V
Wattage: 8W
Lumen: 560-600Lm
Size: 63X112MM
CCT: 2700-6500K



R80
Input Voltage(V): AC110/220V
Wattage: 10W
Lumen: 700-750Lm
Size: 80X108MM
CCT: 2700-6500K

LED Candle Lamp



A040
Input Voltage(V): AC110/220V
Wattage: 3/4/5W
Lumen: 230-440Lm
Size: 36X102MM
CCT: 2700-6500K



A041
Input Voltage(V): AC110/220V
Wattage: 3/4/5W
Lumen: 230-440Lm
Size: 36X108MM
CCT: 2700-6500K



A042
Input Voltage(V): AC110/220V
Wattage: 3/4/5W
Lumen: 230-440Lm
Size: 36X108MM
CCT: 2700-6500K



A043
Input Voltage(V): AC110/220V
Wattage: 3/4/5W
Lumen: 230-440Lm
Size: 36X108MM
CCT: 2700-6500K



A044
Input Voltage(V): AC110/220V
Wattage: 3/4/5W
Lumen: 230-440Lm
Size: 36X108MM
CCT: 2700-6500K



S028
Input Voltage(V): AC110/220V
Wattage: 3/4/5W
Lumen: 230-440Lm
Size: 36X108MM
CCT: 2700-6500K



S042
Input Voltage(V): AC110/220V
Wattage: 3/4/5W
Lumen: 230-440Lm
Size: 36X136MM
CCT: 2700-6500K



LED-C37-A
Input Voltage(V): AC110/220V
Wattage: 1.8/2.6W
Lumen: 100-160Lm
Size: 37X105MM
CCT: 2700-6500K



LED-C37-C
Input Voltage(V): AC110/220V
Wattage: 2W
Lumen: 150-160Lm
Size: 42X132MM
CCT: 2700-6500K

LED Spotlight



LE-201
Voltage:AC 220-240V
Size (mm):35X100
Power :2W
Lumen:200-220Lm
Material:glass
Color temperture:2700-6500K
CRI >80



LE-202
Voltage:AC 220-240V
Size (mm):35X120
Power :2W
Lumen:200-220Lm
Material:glass
Color temperture:2700-6500K
CRI >80



LE-203
Voltage:AC 220-240V
Size (mm):60X105
Power :4W
Lumen:400-440Lm
Material:glass
Color temperture:2700-6500K
CRI >80



S030
Input Voltage(V):AC110-220V
Wattage: 4W/6W
Lumen: 300-320Lm/450-480Lm
Size: 50X55MM/50X62MM
CCT: 2700-6500K



S031
Input Voltage(V):AC110-220V
Wattage: 4W/6W
Lumen: 300-320Lm/450-480Lm
Size: 50X55MM/50X62MM
CCT: 2700-6500K



S032
Input Voltage(V):AC110-220V
Wattage: 4W/6W
Lumen: 300-320Lm/450-480Lm
Size: 50X55MM/50X62MM
CCT: 2700-6500K



S030
Input Voltage(V):AC110-220V
Wattage: 4W/6W
Lumen: 300-320Lm/450-480Lm
Size: 50X55MM/50X62MM
CCT: 2700-6500K



S031
Input Voltage(V):AC110-220V
Wattage: 4W/6W
Lumen: 300-320Lm/450-480Lm
Size: 50X55MM/50X62MM
CCT: 2700-6500K



S032
Input Voltage(V):AC110-220V
Wattage: 4W/6W
Lumen: 300-320Lm/450-480Lm
Size: 50X55MM/50X62MM
CCT: 2700-6500K

LED Spotlight



S011
Input Voltage(V):AC110-220V
Wattage: 3W / 5W / 7W
Lumen: 230-550Lm
Size: 50X76MM
CCT: 2700-6500K



S012
Input Voltage(V):AC110-220V
Wattage: 3W / 5W / 7W
Lumen: 230-550Lm
Size: 50X76MM
CCT: 2700-6500K



S015
Input Voltage(V):AC110-220V
Wattage: 3W / 5W / 7W
Lumen: 230-550Lm
Size: 50X75MM
CCT: 2700-6500K



S016
Input Voltage(V):AC110-220V
Wattage: 3W / 5W / 7W
Lumen: 230-550Lm
Size: 50X75MM
CCT: 2700-6500K



S017
Input Voltage(V): AC\DC12V
Wattage: 3W / 5W
Lumen: 230-380Lm
Size: 50X50MM
CCT: 2700-6500K



S018
Input Voltage(V): AC110-220V
Wattage: 3W / 5W
Lumen: 230-380Lm
Size: 50X50MM
CCT: 2700-6500K



S019
Input Voltage(V): AC110-220V
Wattage: 3W / 5W
Lumen: 230-380Lm
Size: 50X52MM
CCT: 2700-6500K



S020
Input Voltage(V): AC110-220V
Wattage: 3W / 5W
Lumen: 230-380Lm
Size: 50X52MM
CCT: 2700-6500K



S021
Input Voltage(V): AC\DC12V
Wattage: 3W / 5W
Lumen: 230-380Lm
Size: 50X50MM
CCT: 2700-6500K

LED Spotlight



S021-02
Input Voltage(V): AC\DC12V
Wattage: 3W / 5W
Lumen: 230-380Lm
Size: 50X50MM
CCT: 2700-6500K



S023
Input Voltage(V): AC\DC12V
Wattage: 1.5W
Lumen: 130Lm
Size: 50X51MM
CCT: 2700-6500K



S023
Input Voltage(V): AC\DC12V
Wattage: 5W
Lumen: 300-330Lm
Size: 50X54MM
CCT: 2700-6500K



S024
Input Voltage(V): AC\DC12V
Wattage: 3W / 5W
Lumen: 230-380Lm
Size: 50X54MM
CCT: 2700-6500K



S025
Input Voltage(V): AC\DC12V
Wattage: 3W / 5W
Lumen: 230-380Lm
Size: 50X54MM
CCT: 2700-6500K



S026
Input Voltage(V): AC110-220V
Wattage: 3W / 5W
Lumen: 230-380Lm
Size: 50X54MM
CCT: 2700-6500K



S027
Input Voltage(V): AC\DC12V
Wattage: 3W / 5W / 7W
Lumen: 230-550Lm
Size: 50X54MM
CCT: 2700-6500K



S028
Input Voltage(V): AC\DC12V
Wattage: 3W / 5W / 7W
Lumen: 230-550Lm
Size: 50X54MM
CCT: 2700-6500K



LED-MR-2835
Input Voltage(V): DC12V
Wattage: 2.5/2.8/3.3/3.6W
18/21/24/27PCS 2835 LED
Lumen: 200-380Lm
Size: 50X50MM
CCT: 2700-6500K

LED Spotlight



COB-MR16-5W
Input Voltage(V): DC12V
Wattage: 5W
1PC LED Bulb
Lumen: 300-330Lm
Size: 50X58MM
CCT: 2700-6500K



COB-MR16-5WB
Input Voltage(V): DC12V
Wattage: 5W
1PC LED Bulb
Lumen: 300-330Lm
Size: 50X58MM
CCT: 2700-6500K



COB-MR16-4WB
Input Voltage(V): AC12V
Wattage: 4W
1PC LED Bulb
Lumen: 300Lm
Size: 50X53MM
CCT: 2700-6500K



COB-MR16-4W
Input Voltage(V): AC12V
Wattage: 4W
1PC LED Bulb
Lumen: 300Lm
Size: 50X53MM
CCT: 2700-6500K



LED-MR16-3*1W
Input Voltage(V): DC12V,220-240V
Wattage:3x1W,3x2W
3PCS LED Bulb
Lumen: 220-360Lm
Size: 50X77MM
CCT: 2700-6500K



LED-MR16(GU10)30-3
Input Voltage(V): AC/DC12,220-240V
Wattage:3W
3PCS LED Bulb
Lumen: 220Lm
Size: 50X57MM
CCT: 2700-6500K



LED-MR16(GU10)30-4
Input Voltage(V): AC/DC12,220-240V
Wattage:4W
4PCS LED Bulb
Lumen: 280Lm
Size: 50X57MM
CCT: 2700-6500K



LED-MR16(GU10)30-5
Input Voltage(V): AC/DC12,220-240V
Wattage:5W
5PCS LED Bulb
Lumen: 370Lm
Size: 50X57MM
CCT: 2700-6500K



LED-MR16(GU10)30-7
Input Voltage(V): AC/DC12,220-240V
Wattage:6.5W
7PCS LED Bulb
Lumen: 450Lm
Size: 50X57MM
CCT: 2700-6500K

LED Spotlight



COB-GU10-4WB
Input Voltage(V): 220-240V
Wattage: 4W
1PC LED Bulb
Lumen: 300Lm
Size: 50X58MM
CCT: 2700-6500K



COB-GU10-4W
Input Voltage(V): 220-240V
Wattage: 4W
1PC LED Bulb
Lumen: 300Lm
Size: 50X58MM
CCT: 2700-6500K



LED-2835
Input Voltage(V): 220-240V
Wattage: 2.5/2.8/3.3/3.6W
18/21/24/27PCS 2835 LED Bulb
Lumen: 300Lm
Size: 50X53MM
CCT: 2700-6500K



LED-MR16-3528
Input Voltage(V): DC12V
Wattage: 3.5/4W
48/60PCS 3528 LED Bulb
Lumen: 160/250Lm
Size: 50X50MM
CCT: 2700-6500K



LED-MR16-5050
Input Voltage(V): DC12V
Wattage: 1.9/2.2/3.6/4W
9/12/18/21PCS 5050 LED Bulb
Lumen: 100-230Lm
Size: 50X50MM
CCT: 2700-6500K



LED-GU10-3528
Input Voltage(V): DC12V
Wattage: 3.5/4W
48/60PCS 3528 LED Bulb
Lumen: 160/250Lm
Size: 50X50MM
CCT: 2700-6500K



LED-JDR-3*1WA
Input Voltage(V): 220-240V
Wattage: 3W
3PCS LED Bulb
Lumen: 220-260Lm
Size: 50X93MM
CCT: 2700-6500K



LED-JDR-3*1WB
Input Voltage(V): 220-240V
Wattage: 3W
3PCS LED Bulb
Lumen: 220-260Lm
Size: 50X93MM
CCT: 2700-6500K



LED-JDR-3*1W
Input Voltage(V): 220-240V
Wattage: 3W
3PCS LED Bulb
Lumen: 220-260Lm
Size: 50X93MM
CCT: 2700-6500K

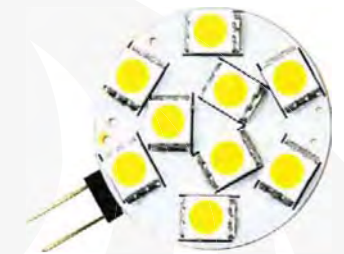
G4 G9 LAMP



LED-G4-SMD A
Input Voltage(V): DC8-30V
Wattage: 1.5W
25PCS 3528 SMD
Lumen: 80-100Lm
Size: 10X45MM
CCT: 2700-6500K



LED-G4-SMD B
Input Voltage(V): DC8-30V
Wattage: 3.6W
18PCS 5050 SMD
Lumen: 160-200Lm
Size: 18X33MM
CCT: 2700-6500K



LED-G4-SMD D
Input Voltage(V): DC8-30V
Wattage: 1.5W
9PCS 5050 SMD
Lumen: 90-100Lm
Size: 28X42MM
CCT: 2700-6500K



G4-201
Input Voltage(V): 220-240V
Wattage: 1.8W
Lumen: 100Lm
Size: 18.2X48.9MM
CCT: 2700-6500K
Beam Angle: 360°



G9-101
Input Voltage(V): 220-240V
Wattage: 1.8W
Lumen: 130Lm
Size: 14X42MM
CCT: 2700-6500K
Beam Angle: 360°



G9-105
Input Voltage(V): 220-240V
Wattage: 1.8W
Lumen: 100Lm
Size: 20X54.5MM
CCT: 2700-6500K
Beam Angle: 360°



G9-103
Input Voltage(V): 220-240V
Wattage: 1.8W
Lumen: 120Lm
Size: 16.9X41MM
CCT: 2700-6500K
Beam Angle: 360°



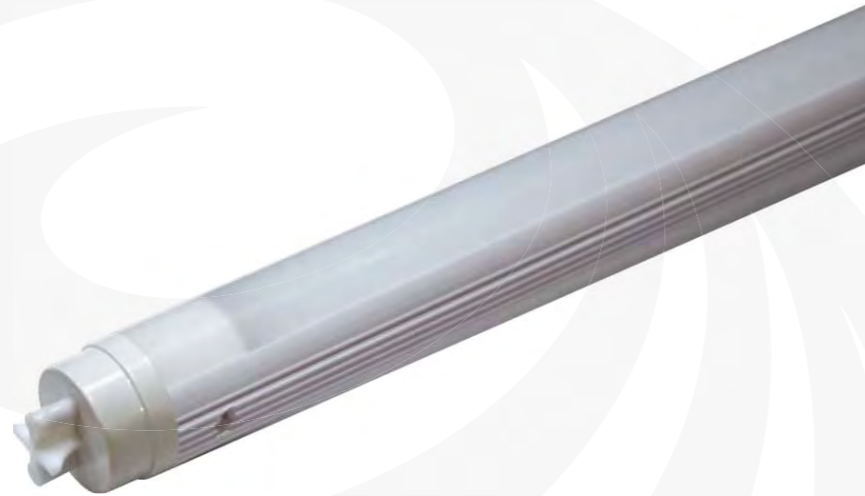
G9-205
Input Voltage(V): 220-240V
Wattage: 2.5W
Lumen: 200Lm
Size: 14.3X47MM
CCT: 2700-6500K
Beam Angle: 360°



G9-301
Input Voltage(V): 220-240V
Wattage: 3W
Lumen: 240Lm
Size: 19.2X53MM
CCT: 2700-6500K
Beam Angle: 360°

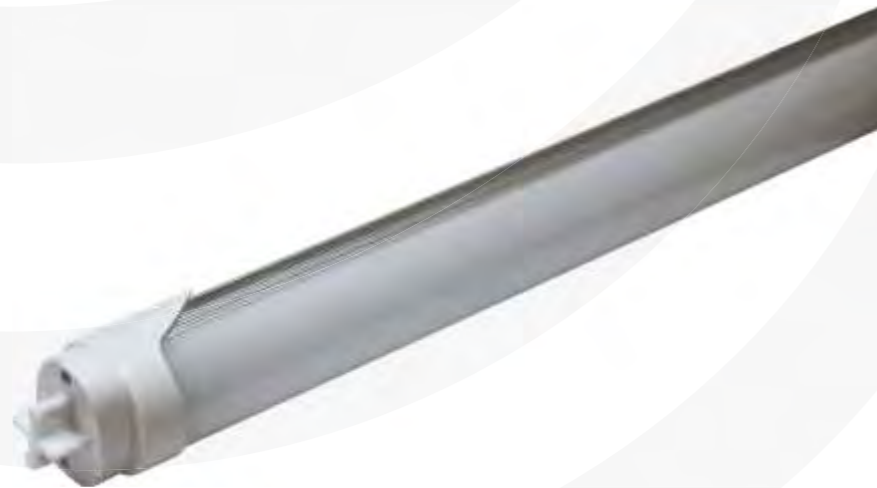
LED Tube

Plastic



Model	Voltage	Real Power	Lumen	Length	CCT
T8P60	AC220-240V	8W	640lm	600mm	2700-6500K
T8P90	AC220-240V	14W	1200lm	900mm	2700-6500K
T8P120	AC220-240V	18W	1450lm	1200mm	2700-6500K
T8P150	AC220-240V	22W	1800lm	1500mm	2700-6500K

Aluminium



Model	Voltage	Real Power	Lumen	Length	CCT
T8A60	AC220-240V	8W	640lm	600mm	2700-6500K
T8A90	AC220-240V	14W	1200lm	900mm	2700-6500K
T8A120	AC220-240V	18W	1450lm	1200mm	2700-6500K
T8A150	AC220-240V	22W	1800lm	1500mm	2700-6500K

LED Floodlight

**Input Voltage(V):86-265V
CCT: 2700-6500K
Protection class:IP65**



Wattage: 50W
Lumen: 3500lm
Size: 285x71x295MM

Wattage: 30W
Lumen: 2100lm
Size: 226x57x250MM

Wattage: 20W
Lumen: 1400lm
Size: 185x59x204MM

Wattage: 10W
Lumen: 700lm
Size: 118x48x148MM



Wattage: 50W
Lumen: 3500lm
Size: 285x71x295MM

Wattage: 30W
Lumen: 2100lm
Size: 226x57x250MM

Wattage: 20W
Lumen: 1400lm
Size: 185x59x204MM

Wattage: 10W
Lumen: 700lm
Size: 118x48x148MM

▣ **LED Floodlight**



LL3001
Voltage:AC85-65V
Power:10/20/30/50W
Lumen:750-4200lm

LL3016
Voltage:AC85-65V
Power:10W
Lumen:700-800lm



LL3002
Voltage:AC85-65V
Power:10/20/50/100W
Lumen:750-9000lm

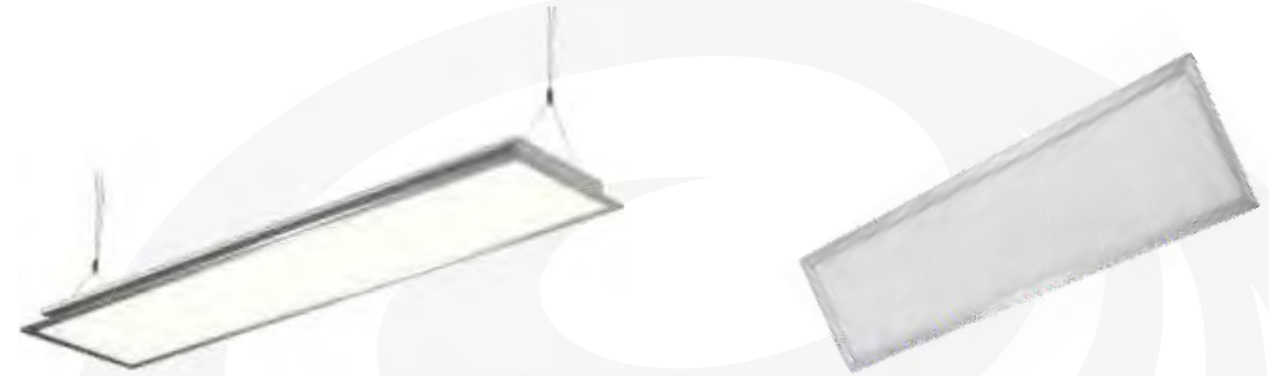


JP-TG022/024/026
Voltage:DC 12/24v
Power:5/10/20W
Lumen:400-1800lm



JP-TG022(026)-RGB
Voltage:DC 12/24v
Power:10/20W
Color Temperature:RGB

▣ **LED Panel Light**

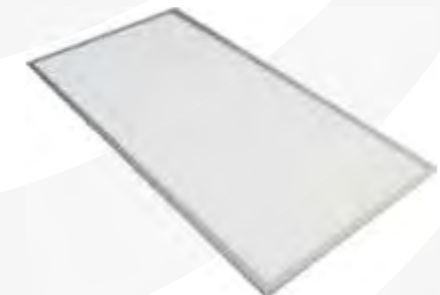


30120-40
Wattage:40W
Lumen:3000Lm
Size:300X1200X14MM
CCT:2700-6500K
Beam Angle:120°
Material: Aluminium+PC

30120-40
Wattage:40W
Lumen:3000Lm
Size:300X1200X14MM
CCT:2700-6500K
Beam Angle:120°
Material: Aluminium+PC



3030-12
Input Voltage(V):85-265V
Wattage:12W
Lumen:900Lm
Size:300X300X14MM
CCT:2700-6500K
Beam Angle:120°
Material: Aluminium+PC



60120-60
Input Voltage(V):85-265V
Wattage:60W
Lumen:4500Lm
Size:600X1200X14MM
CCT:2700-6500K
Beam Angle:120°
Material: Aluminium+PC



PLR
Input Voltage(V):AC85-265V
Wattage:3W/6W/9W/12W/15W/18W
Lumen:180/430/680/960/1200/1550Lm
Diameter:90/125/145/175/190MM
Height:25MM
Hole size:75/110/135/160/180/210MM
CCT: 2700-6500K
Beam Angle:120°



PLR-S
Input Voltage(V):AC85-265V
Wattage:3W/6W/9W/12W/15W/18W
Lumen:180/460/680/960/1150/1650Lm
Diameter:90x90/125x125/145x145/175x175/190x190/225x225MM
Height:25MM
Hole size:75/110/135/160/180/210MM
CCT: 2700-6500K
Beam Angle:120°

LED Strip Light



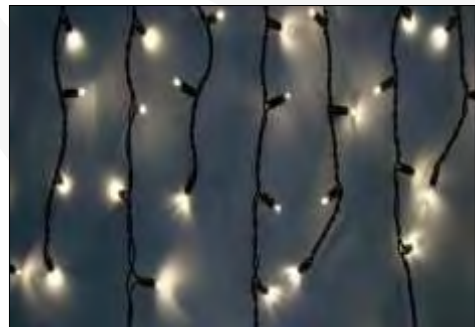
LR102-Non-Waterproof
Voltage:DC12V
Power:7.2W
Color:Red,Yello,Blue,Green,White
RGB
LED Qty:30pcs



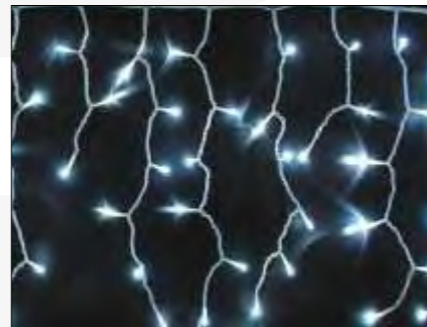
LR102-Waterproof
Voltage:DC12V
Power:7.2W
Color:Red,Yello,Blue,Green,White
RGB
LED Qty:30pcs



LR121
Voltage:DC12V
Power:4.8W
Color:Red,Yello,Blue,Green,White
RGB
LED Qty:60pcs



Ice Lantern



Ice Lantern



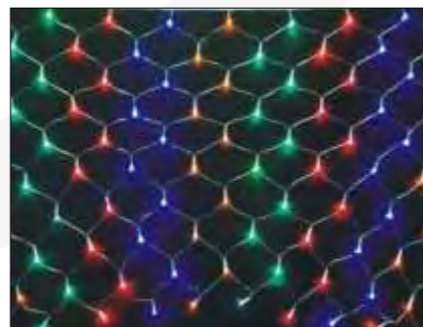
Full Spherical Lamp String



Single Lamp String



Single Lamp String



Square Net Lamp

LED Stage lamp



QCZD
Input Voltage(V): AC110/220V
Wattage: 3/6W
Specification: 5CM/8CM
Classification:
a naked light(conventional E27 lamp cap,also can do the socket type B22 lamp cap)
with the wall type socket type,table 1 meters round plug,hanging 1 meters round
plug,cylinder(with hook) 1 meters circular interpolation.
Note: both can be like a color on the shell



ZD-CZ
Input Voltage(V): DC12V
Wattage: 3.96W

Input Voltage(V): AC110/220V
Wattage: 3.6W



QCZD
Specification: 10cm/15cm,20cm/25cm,30cm/35cm,40cm/50cm,60cm/80cm
Input Voltage(V): AC110/220V
Classification: desktop,hanging type,screw type
Difference/rates power:
60cm under spec is 3 grain of high power lamp bead,the power of 9.5W
60cm above specifications is 6 grain of high power lamp bead, the power of 16.5W
80CM above specification is 12 high power lamp bead,power 27.5W

LED Stage lamp



YYQ-MP3

Input Voltage(V): AC110/220V
PowerMP3-12.6W
NO MP3-6.6W
Characteristics:
remote control,3 grain of high-power lamp,voice
The transparent cover: crystal and dream



LED Stage lamp



WTD-WX

Input Voltage(V): AC110/220V
Wattage: 12.5W-220hour
Size: 25X25X41MM
Wattage: 15W-280hour
Size: 29.3X29.3X46.5MM
220/280LED universal stage lights,do voice

XTY

Input Voltage(V): AC110/220V
Wattage: 5W
Input Form: Plug Form/Round/Flat Plug
Lamp Holder Form: E27



XTY-DZ

Input Voltage(V): AC110/220V
Wattage: 3.5W
Input Form: E27 Screw Input Form
Plug Line Input Form



XTY-DA

Input Voltage(V): AC110/220V
Wattage: 8W
Input Form: Power Plug Line
E27 Screw Input mode



XTY-MH

Input Voltage(V): AC110/220V
Wattage: 5.7W

LED Downlight



1031
Input Voltage(V): AC110/220V
Wattage: 3W
Lumen: 180-210Lm
Size: Φ85X45MM
Hole size: Φ65MM
CCT: 2700-6500K
Beam Angle: 45°



1032
Input Voltage(V): AC110/220V
Wattage: 5W
Lumen: 300-330Lm
Size: Φ105X50MM
Hole size: Φ85MM
CCT: 2700-6500K
Beam Angle: 45°



1033
Input Voltage(V): AC110/220V
Wattage: 9W
Lumen: 540-630Lm
Size: Φ130X48MM
Hole size: Φ105MM
CCT: 2700-6500K
Beam Angle: 65°



1034
Input Voltage(V): AC110/220V
Wattage: 12W
Lumen: 720-840Lm
Size: Φ165X50MM
Hole size: Φ138MM
CCT: 2700-6500K
Beam Angle: 65°



1035
Input Voltage(V): AC110/220V
Wattage: 15W
Lumen: 900-1050Lm
Size: Φ190X52MM
Hole size: Φ165MM
CCT: 2700-6500K
Beam Angle: 85°



1036
Input Voltage(V): AC110/220V
Wattage: 20W
Lumen: 1200-1400Lm
Size: Φ220X55MM
Hole size: Φ198MM
CCT: 2700-6500K
Beam Angle: 85°

LED Downlight



1131
Input Voltage(V): AC110/220V
Wattage: 3W
Lumen: 165-195Lm
Size: Φ85X45MM
Hole size: Φ65MM
CCT: 2700-6500K
Beam Angle: 111°



1132
Input Voltage(V): AC110/220V
Wattage: 5W
Lumen: 275-325Lm
Size: Φ105X50MM
Hole size: Φ85MM
CCT: 2700-6500K
Beam Angle: 111°



1133
Input Voltage(V): AC110/220V
Wattage: 9W
Lumen: 500-550Lm
Size: Φ130X48MM
Hole size: Φ105MM
CCT: 2700-6500K
Beam Angle: 111°



1134
Input Voltage(V): AC110/220V
Wattage: 12W
Lumen: 660-750Lm
Size: Φ165X50MM
Hole size: Φ138MM
CCT: 2700-6500K
Beam Angle: 111°



1135
Input Voltage(V): AC110/220V
Wattage: 15W
Lumen: 825-900Lm
Size: Φ190X52MM
Hole size: Φ165MM
CCT: 2700-6500K
Beam Angle: 111°



1136
Input Voltage(V): AC110/220V
Wattage: 20W
Lumen: 1100-1300Lm
Size: Φ220X55MM
Hole size: Φ198MM
CCT: 2700-6500K
Beam Angle: 111°

LED Downlight



D102
Input Voltage(V): AC110/220V
Wattage: 10W
Lumen: 700-800Lm
Size: 111X111X95MM
Hole size: 98X98MM
CCT: 2700-6500K
Beam Angle: 23°



D104
Input Voltage(V): AC110/220V
Wattage: 20W
Lumen: 1400-1600Lm
Size: 200X111X95MM
Hole size: 198X98MM
CCT: 2700-6500K
Beam Angle: 23°



D106
Input Voltage(V): AC110/220V
Wattage: 40W
Lumen: 2800-3200Lm
Size: 200X200X95MM
Hole size: 185X185MM
CCT: 2700-6500K
Beam Angle: 23°



D108
Input Voltage(V): AC110/220V
Wattage: 15W
Lumen: 1050-1200Lm
Size: 137X137X110MM
Hole size: 126X130MM
CCT: 2700-6500K
Beam Angle: 41°



D112
Input Voltage(V): AC110/220V
Wattage: 30W
Lumen: 2100-2400Lm
Size: 236X137X110MM
Hole size: 250X130MM
CCT: 2700-6500K
Beam Angle: 41°



D114
Input Voltage(V): AC110/220V
Wattage: 60W
Lumen: 4200-4800Lm
Size: 260X260X110MM
Hole size: 250X250MM
CCT: 2700-6500K
Beam Angle: 41°

LED Downlight



C302
Input Voltage(V): AC110/220V
Wattage: 10W
Lumen: 335Lm
Size: Φ90X114MM
Hole size: Φ78MM
CCT: 2700-6500K
Beam Angle: 26°



C304
Input Voltage(V): AC110/220V
Wattage: 10W
Lumen: 330Lm
Size: Φ90X114MM
Hole size: Φ78MM
CCT: 2700-6500K
Beam Angle: 29°



C306
Input Voltage(V): AC110/220V
Wattage: 10W
Lumen: 320Lm
Size: Φ90X114MM
Hole size: Φ78MM
CCT: 2700-6500K
Beam Angle: 29°



C308
Input Voltage(V): AC110/220V
Wattage: 10W
Lumen: 660Lm
Size: Φ90X114MM
Hole size: Φ78MM
CCT: 2700-6500K
Beam Angle: 23°



C310
Input Voltage(V): AC110/220V
Wattage: 10W
Lumen: 600Lm
Size: Φ90X114MM
Hole size: Φ78MM
CCT: 2700-6500K
Beam Angle: 21°



C312
Input Voltage(V): AC110/220V
Wattage: 10W
Lumen: 550Lm
Size: Φ90X114MM
Hole size: Φ78MM
CCT: 2700-6500K
Beam Angle: 21°

LED Downlight



C314
Input Voltage(V): AC110/220V
Wattage: 10W
Lumen: 650Lm
Size: Φ90X114MM
Hole size: Φ78MM
CCT: 2700-6500K
Beam Angle: 29°



C402
Input Voltage(V): AC110/220V
Wattage: 8W
Lumen: 480Lm
Size: Φ80X110MM
Hole size: Φ95MM
CCT: 2700-6500K
Beam Angle: 19°



C404
Input Voltage(V): AC110/220V
Wattage: 8W
Lumen: 315Lm
Size: Φ99X110MM
Hole size: Φ92MM
CCT: 2700-6500K
Beam Angle: 19°



C406
Input Voltage(V): AC110/220V
Wattage: 8W
Lumen: 500Lm
Size: Φ99X110MM
Hole size: Φ92MM
CCT: 2700-6500K
Beam Angle: 19°



C408
Input Voltage(V): AC110/220V
Wattage: 7W
Lumen: 560-590Lm
Size: Φ80X86MM
Hole size: Φ72MM
CCT: 2700-6500K
Beam Angle: 25°



C408
Input Voltage(V): AC110/220V
Wattage: 15W
Lumen: 1200-1300Lm
Size: Φ95X115MM
Hole size: Φ105MM
CCT: 2700-6500K
Beam Angle: 45°

Emergency Light

1X20W



MD720
Specification: Wall mounted, test function button
green indicator for battery, red for charge
Color: Red & white
Battery: 6V seal lead-acid battery(4Ah/3.2Ah/1.6Ah)
Product size: 8X9.5X63.5cm

2X20W



MD2286
Specification: Wall mounted, test function button
green indicator for battery, red for charge
Color: Red & white
Battery: 6V seal lead-acid battery(4Ah/3.2Ah/1.6Ah)
Product size: 9X9X66.5cm

2X10W



MD210
Specification: Wall mounted, test function button
green indicator for battery, red for charge
Color: Red & white
Battery: 6V seal lead-acid battery(4Ah/3.2Ah/1.6Ah)

2X6W



MD720
Specification: Wall mounted, red indicator for charge
Color: white
Battery: 6V seal lead-acid battery(4Ah/3.2Ah/1.6Ah)
Product size: 9X8X30cm

Emergency Lamp

1x9W



MD003
Specification: Wall mounted, red indicator for charge
Color: white
Battery: 6V seal lead-acid battery(4Ah/3.2Ah/1.6Ah)
Product size: 9X8. 5X19cm

2x6W



MD284
Specification: Wall mounted, test function button green indicator for battery, red for charge
Color: white
Battery: 6V seal lead-acid battery(4Ah/3.2Ah/1.6Ah)
Product size: 9X9X30cm

2x6W



MD710
Product: rechargeable portable lamp red indicator for charge
Color: Red
Battery: 6V seal lead-acid battery(4Ah/3.2Ah/1.6Ah)
Product size: 14x10x29.5cm

3W search light
7W energy saving lamp



Md300
Product: 2 in 1 rechargeable portable emergency lamp red indicator for charge
Color: Red
Battery: 6V seal lead-acid battery(4Ah/3.2Ah/1.6Ah)

LED Emergency Lamp

30+9LED



MD810L-39
Specification: Wall mounted, test function button green indicator for battery, red for charge
Color: Red & white
Battery: 6V seal lead-acid battery(4Ah/3.2Ah/1.6Ah)
Product size: 10.5x8x39cm

3+18LED



MD268L-S
Product: 3+18 LED rechargeable portable lamp with solar power rechargeable and electric rechargeable
Color: white
Battery: 6V seal lead-acid battery(4Ah/3.2Ah/1.6Ah)
Product size: 9x8.5x19cm

36LED



MD284L-36S
Product: 36 LED rechargeable portable emergency lamp with solar power rechargeable and electric rechargeable wall mounted, test function button, green indicator for battery, red for charge
Battery: 6V seal lead-acid battery(4Ah/3.2Ah/1.6Ah)
Product size: 9x8.5x19cm

50+10LED



MD710L-60
Product: rechargeable portable lamp red indicator for charge
Color: Red
Battery: 6V seal lead-acid battery(4Ah/3.2Ah/1.6Ah)
Product size: 14x10x29.5cm

LED Emergency Lamp

40LED



MD710L-40
Product: rechargeable portable lamp
red indicator for charge
Color: Red
Battery: 6V seal lead-acid battery(4Ah/3.2Ah/1.6Ah)
Product size: 14x10x29.5cm

30LED



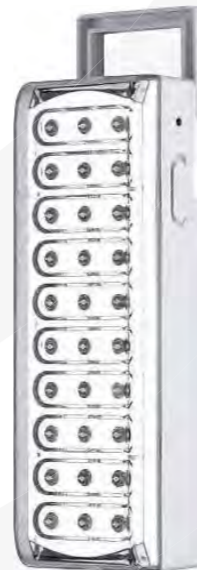
MD230
Specification: Wall mounted, test function button
green indicator for battery, red for charge
Color: white
Battery: 6V seal lead-acid battery(4Ah/3.2Ah/1.6Ah)
Product size: 9x8x42cm

24+6LED



MD830B
Specification: Wall mounted, red indicator for charge
Color: white
Battery: Battery"4V seal lead-acid battery(4V 1.2Ah)
Product size: 18x5.7x4.5cm

30LED



MD830
Specification: Wall mounted, red indicator for charge
Color: white
Battery: Battery"4V seal lead-acid battery(4V 1.2Ah)
Product size: 18x5.7x4.5cm

Camping Lantern

19LED

12LED



MD153-12
MD153-19
Product: with one adaptor,one car plug and obe belt
Battery: 6V seal lead-acid battery(4Ah/3.2Ah/1.6Ah)
Color: yellow,army green

Halogen Bulb



MD153
Product: with one adaptor,one car plug and obe belt
Battery: 6V seal lead-acid battery(4Ah/3.2Ah/1.6Ah)
Color: yellow, army green

37LED



MD116L-37
Product: with one adaptor,one car plug and obe belt
Battery: 6V seal lead-acid battery(4Ah/3.2Ah/1.6Ah)
Color: yellow, army green

Camping Lantern



7/9LED

MDCL2

Battery: Using 4 dry battery(not included)
Color: Green, yellow, army green



7/9LED

MDCL1
MDCL3

With one adaptor and one car plug
Battery: 6V seal lead-acid battery
(4Ah/3.2Ah/1.6Ah)
Color: Red,green,army green,yellow



MD109

With electric rechargeable
Battery: 6V seal lead-acid battery
(4Ah/3.2Ah/1.6Ah)
Color: Silver&green



MD109L

With electric rechargeable
Battery: 6V seal lead-acid battery
(4Ah/3.2Ah/1.6Ah)
Color: Silver&green

rechargeable portable
Camping Lantern

LED Driver



LED-D101



LED-D107



LED-D108



LED-D109



LED-D104



LED-D103



LED-D301



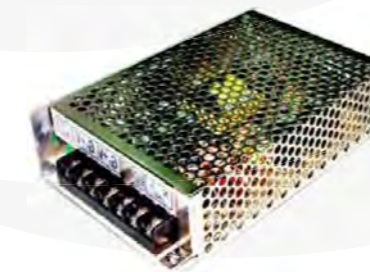
LED-D402



LED-D106



LED-D106



LED-D106



LED-D106

Energy Saving Lamp



EL201
Voltage:110-130V/220-240V
Power:7/9/11/13/15/18W
Tube dia.:9mm/12mm



EL311
Voltage:110-130V/220-240V
Power:15/20/25W
Tube dia.:9mm/12mm



EL411
Voltage:110-130V/220-240V
Power:9/11/13W
Tube dia.:7mm



EL541
Voltage:110-130V/220-240V
Power:9/11/15W
Tube dia.:7mm



EL502
Voltage:110-130V/220-240V
Power:15/20/25W
Tube dia.:12mm



EL701
Voltage:110-130V/220-240V
Power:7/9/11W
Tube dia.:7mm



EL853
Voltage:110-130V/220-240V
Power:125/150/200W
Tube dia.:17mm



EL854
Voltage:110-130V/220-240V
Power:45-125W
Tube dia.:17mm



EL856
Voltage:110-130V/220-240V
Power:105-200W
Tube dia.:17mm/19mm

Fluorescent Tube



FP101
Voltage:110-130V/220-240V
Power:5/7/9/11W
Base:G23



FP102
Voltage:110-130V/220-240V
Power:5/7/9/11W
Base:2G7



FP201
Voltage:110-130V/220-240V
Power:10/13/18/26W
Base:G24D



FP601
Voltage:110-130V/220-240V
Power:18/27W
Base:GX10Q



FC301
Voltage:110-130V/220-240V
Power:16/21/28/38/55W
Base:GR8/GR10Q



FC101B
Voltage:110-130V/220-240V
Power:22/28/32/40W
Base:G10Q



T4/T5/T8/T10
Voltage:110-130V/220-240V
Socket:G5/G13

Halogen Bulb



MR11
Voltage:12V
Power:20/35W
Socket:GU4



MR16
Voltage:12V
Power:20/35/50/75W
Socket:GU5.3



JCDR
Voltage:120/230V
Power:20/35/50/75W
Socket:GX5.3



GU10
Voltage:120/230V
Power:35/50/75W
Socket:GU10



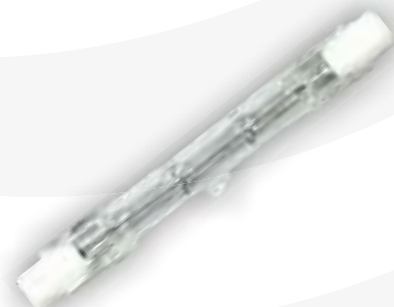
JDR
Voltage:120/230V
Power:35/50/75W
Socket:E14/E27



PAR38
Voltage:120/230V
Power:75/100/150W
Socket:E27



R50/63
Voltage:120/230V
Power:18-52W
Socket:E14/E27



J78/118
Voltage:120/230V
Power:60-500W
Socket:R7S



J189
Voltage:120/230V
Power:750/1000W
Socket:R7S

HID Bulb



MB102
Power:70/150/250W



MB103
Power:70/150/250/400W



MB106
Power:400W



HS101
Power:70/150W



HS102
Power:70/150/250/400W



HM101
Power:50/80/125/250/400W



BT401



BT405



BT402



EG101

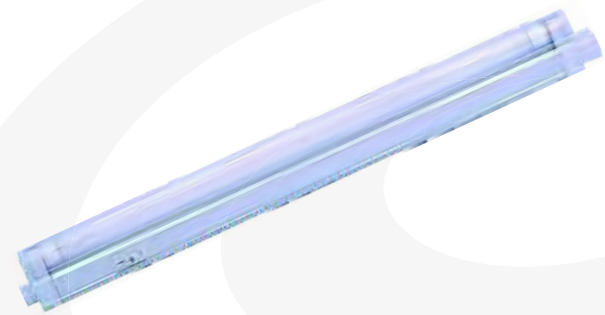


EG201



EG301

Fluorescent Fixture



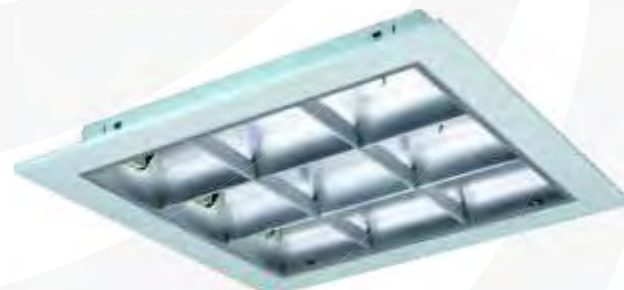
FL1002
Voltage:220-240V/110-130V
Power:6-30W
Socket:G5



FL4002
Voltage:220-240V/110-130V
Power:2X20W/2X40W
Socket:G13



FL5211
Voltage:220-240V/110-130V
Power:4x14W
Socket:G5



FL5221
Voltage:220-240V/110-130V
Power:3x36W
Socket:2G11



FL3011
Voltage:220-240V/110-130V
Power:18/36/58W
Socket:G13



FL3121
Voltage:220-240V/110-130V
Power:2x18/2x36/2x58W
Socket:G13

Transformer

Electronic Transformer



ET112



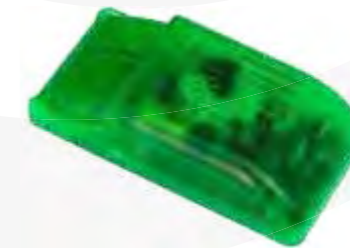
ET110



ET107



ET103



ET108



ET102

Magnetic Transformer



ET301



ET303



ET302



ET305



ET306



ET307

Outdoor Light



LL1002
Voltage:220-240V/110-130V
Power:150W
Socket:R7S



YL1001
Voltage:220-240V/110-130V
Power:150/400W
Socket:E27/E40



YL1008
Voltage:220-240V/110-130V
Power:400W
Socket:E40



YL1002
Voltage:220-240V/110-130V
Power:150W
Bulb:HPS



YL1003
Voltage:220-240V/110-130V
Power:400W
Bulb:HPS/MH



YL1005
Voltage:220-240V/110-130V
Power:250/400W
Bulb:HPS



BL1001
Voltage:220-240V/110-130V
Power:250W
Socket:E40



BL1016
Voltage:220-240V/110-130V
Power:400W
Socket:E40



BL1011
Voltage:220-240V/110-130V
Power:400W
Socket:E40

Outdoor Light



IG1002
Voltage:220-240V/110-130V
Power:70-150W
Socket:G12/R7S/E27



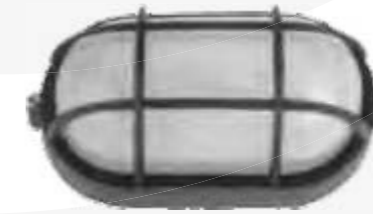
IG1004
Voltage:220-240V/110-130V
Power:18/50/75W
Socket:G5.3/E27



IG2001
Voltage:220-240V/110-130V
Power:50W
Socket:G5.3



AL1102
Voltage:220-240V/110-130V
Power:60/100W
Socket:E27/G23



AL2102
Voltage:220-240V/110-130V
Power:60/100W
Socket:E27/G23



AL1106
Voltage:220-240V/110-130V
Power:60/100W
Socket:E27/G23



AL2107
Voltage:220-240V/110-130V
Power:60/100W
Socket:E27/G23



AL4102
Voltage:220-240V/110-130V
Power:60/100W
Socket:E27/G23



AL4104
Voltage:220-240V/110-130V
Power:60/100W
Socket:E27/G23

Bulkhead Light



HB-A30
Input Voltage(V): 85-265V
Wattage: 30W
Lumen: 3000Lm
Size: 220X140X148MM
CCT: 5500-6500K
Beam Angle: 90°
Protection class: IP65



HB-A60
Input Voltage(V): 85-265V
Wattage: 60W
Lumen: 6000Lm
Size: 346X145X148MM
CCT: 5500-6500K
Beam Angle: 90°
Protection class: IP65



HB-A90
Input Voltage(V): 85-265V
Wattage: 90W
Lumen: 9000Lm
Size: 510X140X148MM
CCT: 5500-6500K
Beam Angle: 90°
Protection class: IP65



HB-A120
Input Voltage(V): 85-265V
Wattage: 120W
Lumen: 12000Lm
Size: 346X290X148MM
CCT: 5500-6500K
Beam Angle: 90°
Protection class: IP65



HB-A180
Input Voltage(V): 85-265V
Wattage: 180W
Lumen: 18000Lm
Size: 510X290X148MM
CCT: 5500-6500K
Beam Angle: 90°
Protection class: IP65

Bulkhead Light



HB-A180X
Input Voltage(V): 85-265V
Wattage: 180W
Lumen: 18000Lm
Size: 346X445X148MM
CCT: 5500-6500K
Beam Angle: 90°
Protection class: IP65



HB-A240
Input Voltage(V): 85-265V
Wattage: 240W
Lumen: 24000Lm
Size: 600X346X148MM
CCT: 5500-6500K
Beam Angle: 90°
Protection class: IP65

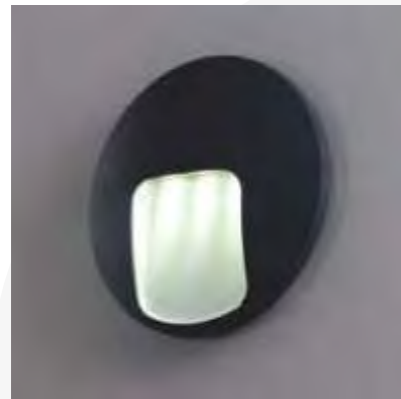


HB-A300
Input Voltage(V): 85-265V
Wattage: 300W
Lumen: 30000Lm
Size: 510X445X148MM
CCT: 5500-6500K
Beam Angle: 90°
Protection class: IP65

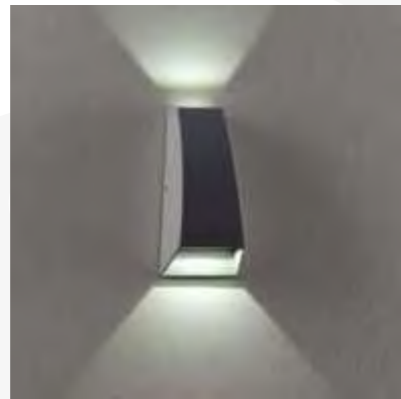


HB-A500
Input Voltage(V): 85-265V
Wattage: 500W
Lumen: 50000Lm
Size: 710X600X148MM
CCT: 5500-6500K
Beam Angle: 90°
Protection class: IP65

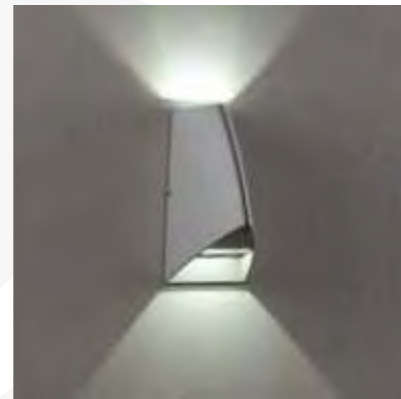
Bulkhead Light



8021
4*1W LED ;IP54
dimension: 235*235*60mm



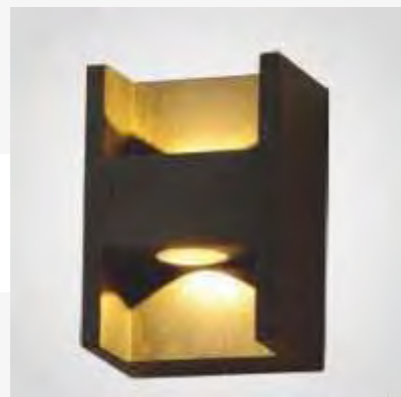
8061
2*1W LED ;IP54
dimension: 84*47*170mm



8062
2*1W LED ;IP54
dimension: 84*130*170mm



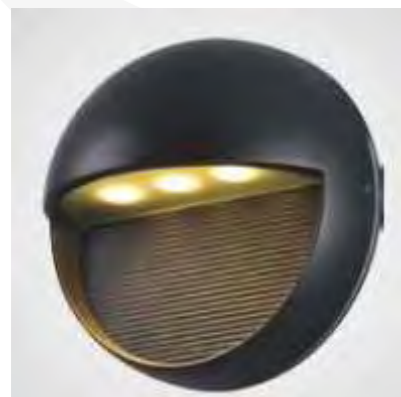
8101B
3*1W LED ;IP54
dimension: 84*130*170mm



8102A
2*1W LED ;IP54
dimension: 85*70*124mm



8102B
1*1W LED ;IP54
dimension: 90*90*90mm



8103A
3*1W LED ;IP54
dimension: 160*160*90mm

Aluminium die-casting body, Tempered glass diffuser
Input Voltage:220V-240V 50/60Hz

Bulkhead Light

Aluminium die-casting body, Clear/frost PC diffuser
Input Voltage:220V-240V 50/60Hz



1905
E27 Max.60W/CFL 13W ;IP54
dimension: 135*260*90mm



1906
E27 Max.60W/CFL 13W ;IP54
dimension: 135*260*90mm



1907
E27 Max.60W/CFL 13W ;IP54
dimension: 135*260*90mm



1908
E27 Max.60W/CFL 13W ;IP54
dimension: 135*260*90mm



1914
E27 Max.60W/CFL 13W ;IP54
dimension: 120*120*350mm



1915
2*E27 Max.60W/CFL 13W ;IP54
dimension: 180*125*305mm



1922A
E27 Max.100W/CFL 18W ;IP54
dimension: 200*135*350mm



1922B
E27 Max.100W/CFL 18W ;IP54
dimension: 200*135*350mm



1922C
E27 Max.100W/CFL 18W ;IP54
dimension: 200*135*350mm